

## LARGE-SCALE BIOLOGY ARTICLE

# An Atlas of Soybean Small RNAs Identifies Phased siRNAs from Hundreds of Coding Genes<sup>VI</sup>

Siwaret Arikiti,<sup>a,b</sup> Rui Xia,<sup>a,b</sup> Atul Kakrana,<sup>b</sup> Kun Huang,<sup>a,b</sup> Jixian Zhai,<sup>a,b</sup> Zhe Yan,<sup>c</sup> Oswaldo Valdés-López,<sup>d</sup> Silvas Prince,<sup>e</sup> Theresa A. Musket,<sup>e</sup> Henry T. Nguyen,<sup>e</sup> Gary Stacey,<sup>c</sup> and Blake C. Meyers<sup>a,b,1</sup>

<sup>a</sup> Department of Plant and Soil Sciences, University of Delaware, Newark, Delaware 19711

<sup>b</sup> Delaware Biotechnology Institute, University of Delaware, Newark, Delaware 19711

<sup>c</sup> Division of Plant Science, University of Missouri, Columbia, Missouri 65211

<sup>d</sup> Unidad de Morfología y Función, FES Iztacala, Universidad Nacional Autónoma de México, Los Reyes Iztacala, Tlalnepantla 54090, Mexico

<sup>e</sup> National Center for Soybean Biotechnology and Division of Plant Sciences, University of Missouri, Columbia, Missouri 65211

ORCID IDs: 0000-0002-2964-1886 (S.A.); 0000-0003-2409-1181 (R.X.); 0000-0002-7597-1800 (H.T.N.); 0000-0003-3436-6097 (B.C.M.)

**Small RNAs are ubiquitous, versatile repressors and include (1) microRNAs (miRNAs), processed from mRNA forming stem-loops; and (2) small interfering RNAs (siRNAs), the latter derived in plants by a process typically requiring an RNA-dependent RNA polymerase. We constructed and analyzed an expression atlas of soybean (*Glycine max*) small RNAs, identifying over 500 loci generating 21-nucleotide phased siRNAs (phasiRNAs; from *PHAS* loci), of which 483 overlapped annotated protein-coding genes. Via the integration of miRNAs with parallel analysis of RNA end (PARE) data, 20 miRNA triggers of 127 *PHAS* loci were detected. The primary class of *PHAS* loci (208 or 41% of the total) corresponded to *NB-LRR* genes; some of these small RNAs preferentially accumulate in nodules. Among the *PHAS* loci, novel representatives of *TAS3* and noncanonical phasing patterns were also observed. A noncoding *PHAS* locus, triggered by miR4392, accumulated preferentially in anthers; the phasiRNAs are predicted to target transposable elements, with their peak abundance during soybean reproductive development. Thus, phasiRNAs show tremendous diversity in dicots. We identified novel miRNAs and assessed the veracity of soybean miRNAs registered in miRBase, substantially improving the soybean miRNA annotation, facilitating an improvement of miRBase annotations and identifying at high stringency novel miRNAs and their targets.**

## INTRODUCTION

Small noncoding RNAs have important roles in development, cell differentiation, adaptation to biotic and abiotic stresses, and genome stability. The main activity of small RNAs is the negative regulation of specific mRNAs or gene expression via target degradation, translational repression, or by directing chromatin modifications (Chen, 2009). Several different classes of small RNAs have been identified to date. In plants, the best-characterized small RNAs are microRNAs (miRNAs) and small interfering RNAs (siRNAs); these are generated from different precursors and via distinct pathways (Carthew and Sontheimer, 2009). miRNAs, typically 21 to 22 nucleotides in length, are derived from long noncoding RNA precursors transcribed from *MIRNA* genes by RNA polymerase II. The miRNA precursor forms a stem-loop structure processed by DICER-LIKE1 (DCL1), or other DCLs in

rare cases, yielding a single small RNA duplex (miRNA/miRNA\*) with two-nucleotide 3' overhangs (Kim, 2005). One strand of the small RNA duplex is the mature miRNA, the guide strand that is loaded onto an Argonaute (AGO) protein to form an effector complex (the so-called RISC for RNA-induced silencing complex) that directs cleavage or translational repression of target miRNAs (Mallory and Bouché, 2008). The other strand of the duplex, the miRNA\* or passenger strand, is rapidly degraded and normally does not accumulate. siRNAs are canonically processed from perfectly complementary, long double-stranded RNA (dsRNA) precursors that are typically formed by RNA-dependent RNA polymerase (RDRs), or perhaps formed from annealed sense and antisense transcripts (Carthew and Sontheimer, 2009). Several classes of siRNAs have been defined in plants (reviewed in Axtell, 2013), with the major class of heterochromatic siRNAs playing a key role in both establishment and maintenance of cytosine methylation and repressive histone modifications (Kanno and Habu, 2011; Saze et al., 2012). siRNAs are also able to act as a mobile signal with silencing effects spreading from cell to cell, or longer distances, through the movement of siRNAs (Mlotshwa et al., 2002; Dunoyer et al., 2010).

A class of siRNAs of growing interest has been identified as the product of processive cleavage in increments of 21

<sup>1</sup> Address correspondence to meyers@dbi.udel.edu.

The author responsible for distribution of materials integral to the findings presented in this article in accordance with the policy described in the Instructions for Authors ([www.plantcell.org](http://www.plantcell.org)) is: Blake C. Meyers (meyers@dbi.udel.edu).

<sup>VI</sup> Online version contains Web-only data.

[www.plantcell.org/cgi/doi/10.1105/tpc.114.131847](http://www.plantcell.org/cgi/doi/10.1105/tpc.114.131847)

nucleotides from a long dsRNA precursor, generating a phased or perfectly spaced arrangement of small RNAs. These siRNAs, so-called phased siRNAs (phasiRNAs), are triggered by particular miRNA-guided cleavage following either the one-hit ( $1_{22}$ ) or two-hit ( $2_{21}$ ) models capacitated by target sites of one 22-nucleotide or two 21-nucleotide miRNAs, respectively (Fei et al., 2013). The cleaved, uncapped mRNA product serves as a substrate for RDR6, generating a dsRNA precursor, which is then cleaved by DCL4 to produce the 21-nucleotide phased siRNAs. Some of the resulting phased siRNAs have been shown to function in *trans* regulation of target genes; hence, this class of siRNAs was originally called tasiRNAs, yet many more loci generate siRNA of the same phased pattern (*PHAS* loci) with unknown *trans*-activity and hence are labeled with the general title of “phasiRNAs.” tasiRNAs regulate mRNA via cleavage at complementary target sites, like many plant miRNAs (Allen et al., 2005). The most well known tasiRNAs are the set of *trans*-acting short interfering RNA-auxin response factors (tasiARFs) generated from *TRANS-ACTING SIRNA GENE3 (TAS3)* (Allen et al., 2005; Yoshikawa et al., 2005; Axtell et al., 2006). tasiARFs function in the suppression of auxin-responsive factor genes (ARF2, ARF3/ETTIN, and ARF4) (Adenot et al., 2006; Fahlgren et al., 2006; García et al., 2006; Hunter et al., 2006). Many phasiRNAs have been identified in a number of plant species, including *Arabidopsis thaliana* (Axtell et al., 2006), rice (*Oryza sativa*) (Johnson et al., 2009), and *Vitis vinifera* (grapevine) (Zhang et al., 2012). The number of known *PHAS* loci varies substantially between species, from over 800 in wild rice (*Oryza rufipogon*; Liu et al., 2013) to fewer than 30 in *Arabidopsis* (Axtell et al., 2006; Fei et al., 2013). In legumes, 114 and 41 *PHAS* loci were identified in *Medicago truncatula* and soybean (*Glycine max*), respectively (Zhai et al., 2011).

Soybean is economically the most important legume in the world, and it is one of the major sources of protein and edible oil. A genome sequence of soybean is now publicly available (Schmutz et al., 2010; phytozome.org). Genome sequences, together with data generated by next-generation sequencing technologies, have enabled the identification and quantification of small RNAs on a genome-wide scale. To date, hundreds of miRNAs have been identified in soybean (Song et al., 2011; Li et al., 2012). However, many newly annotated miRNAs and their targets have not been well verified, and even annotated miRNAs are often later corrected based on more robust experimental data (Jeong et al., 2011). *PHAS* loci are even more poorly annotated than miRNAs. Compared with *M. truncatula*, far fewer *PHAS* loci have been identified in soybean (Zhai et al., 2011). With extensive small RNA data and higher sequencing depth, many more *PHAS* could be discovered. In this study, we analyzed a large set of small RNA libraries created from diverse tissues to build an expression atlas of small RNAs and comprehensively identify *PHAS* loci in soybean. We demonstrated that many protein-coding genes in soybean are *PHAS* loci. In addition to *NB-LRRs*, previously identified as a primary class of *PHAS* loci in legumes (Zhai et al., 2011), we discovered hundreds of other protein-coding genes that generate phasiRNAs. We integrated parallel analysis of RNA end (PARE) data to identify the miRNA triggers of these *PHAS* loci. From these data, we verified the soybean miRNAs registered in miRBase (version

20) and identified novel miRNAs as well, demonstrating that many of previously reported miRNAs have characteristics of siRNAs. Based on the expression analysis, we demonstrated the tissue- or treatment-specific expression of phasiRNAs, as well as of both known and novel miRNAs.

## RESULTS

### Construction and Sequencing of Small RNA and PARE Libraries from Soybean

We constructed and analyzed a total of 69 small RNA libraries from vegetative and reproductive parts of soybean, including flowers, leaves, and developing nodules; in addition, we integrated public data from seed and seed coat tissues (Supplemental Data Set 1A) (Tuteja et al., 2009; Song et al., 2011). The leaf tissues were from plants under well-watered or drought stress, or using treatments to mimic biotic stresses (i.e., flagellin and chitin treatments). The small RNA libraries for flower tissues were prepared from unopened flowers, open flowers, ovaries, and anthers. The small RNA libraries for nodules were prepared from the developing nodules at 10, 15, 20, 25, and 30 d after inoculation. The libraries we constructed (i.e., all except the seed-related data from published sources) included two to three biological replicates for each sample.

Small RNA reads in the range of 18 to 34 nucleotides were retained, yielding from all libraries a total of 1,967,153,698 reads. After removal of sequences that matched to structural RNAs (predominantly rRNA- or tRNA-derived), 1,158,661,201 genome-matched reads (58.9% of the total) were retained, corresponding to 138,436,684 unique or distinct sequences (11.9% of genome-matched reads and 7.0% of total reads) (Supplemental Data Set 1A). The abundance of sequences in each library was normalized to transcripts per five million (TP5M). The highest proportion of unique sequences was found in nodule libraries (27.5%), while the lowest was found in leaf libraries (6.6%), possibly reflecting saturation of the sRNA complexity in leaves, which had the highest read abundance (Supplemental Data Set 1A). An analysis of the size distributions revealed that the proportion of small RNAs in different size classes varied among different tissues (Supplemental Figure 1). In almost all tissues, the proportion of total read abundance in the sizes of 21 and 24 nucleotides was higher than those of other size classes and consistent across replicates and tissues; the one exception was in leaf tissues in which the proportion of total abundance of reads in the 24-nucleotide class was highly reduced (Supplemental Figures 1A, 1C, 1E, and 1G). This latter case was different from *Arabidopsis* leaves in which the abundance of the 24-nucleotide class is high (Supplemental Figure 2). The proportion of distinct reads in the 24-nucleotide class was greater than the 21-nucleotide class in all tissues, likely reflecting that these are typically heterochromatic siRNAs from a wide set of genomic repeats (Supplemental Figures 1B, 1E, 1F, and 1H). As mentioned above, the leaf libraries had relatively few unique reads among which the most prominent type (68% of all) was miRNAs (Supplemental Figure 2). In the leaf libraries, the miRNAs largely comprised just three species: miR398c, a miR3522 variant, and miR166a, and among these sequences, miR398c accounted for ~22.5% of the 21-nucleotide small RNAs. A rich source of 21-nucleotide small

RNAs in leaves was from intergenic regions (19%). These intergenic region-associated sequences were the most diverse, accounting for 69% of the distinct reads. In the reproductive tissues, the proportion of 22-nucleotide distinct reads was high and comparable to that of 21-nucleotide small RNAs (Supplemental Figure 1B), whereas in nodule and seed tissues, a pattern of higher levels of 22- than 21-nucleotide distinct reads was apparent (Supplemental Figure 1F). All of the genome-matched reads were utilized for miRNA evaluation and phasing locus identification (see below).

### Reevaluation of Annotated miRNAs

miRBase version 20 (<http://www.mirbase.org>) dating from November, 2013, contains over 6000 *MIRNA* genes from more than 70 plant species. Among these, ~554 mature miRNAs derived from 505 precursors have been registered for soybean. Many miRNAs registered in miRBase were computationally identified based on similarity to conserved miRNAs in other species, some were verified by deep-sequencing small RNA libraries, and an even smaller set have their functions verified by PARE data (aka degradome data). In the absence of experimental target validation, like PARE data or 5'-rapid amplification of cDNA ends, predictions of miRNA function may provide ambiguous results. Analysis of rice miRNAs has shown that many predicted miRNAs are marginal, lacking conventional miRNA features, or they are siRNA-like miRNAs rather than typical miRNAs (Jeong et al., 2011). Properties of siRNA-like miRNAs include that the small RNAs at the locus are diverse, distributed, of low abundance and are found on both strands of their generating loci. This analysis of annotated rice miRNAs in miRBase using deep-sequencing small RNA data in conjunction with PARE libraries greatly improved the characterization of typical miRNAs (Jeong et al., 2011). In our study, the use of the largest small RNA data set for soybean generated to date, as well as PARE data, allowed us to evaluate miRBase-annotated soybean miRNAs (from version 20) and to discover novel miRNAs. The criteria for characterizing typical plant miRNAs were based on Meyers et al. (2008), and the process for evaluating miRNAs was essentially as described by Jeong et al. (2011). After removal of annotated miRNAs unmatched to the soybean version 1.1 genome, 530 previously reported miRNAs were subjected to a process of reevaluation to characterize each one as either (A) a weakly expressed miRNA that is difficult to assess, but resembles a heterochromatic siRNA; (B) highly similar to and likely an siRNA; (C) a miRNA that marginally meets the strict definition (and could include newly evolved miRNAs); and (D) a typical miRNA that meets all standards of well-defined miRNAs (see Methods; examples of each class are shown in Supplemental Figure 3). We also evaluated the conservation of the soybean miRNAs by comparison to *Arabidopsis*, based on the criteria for miRNA families of Meyers et al. (2008), yielding 231 miRNAs conserved between soybean and *Arabidopsis*, with names assigned accordingly in the miRNA list (Supplemental Data Set 1B); these miRNAs clearly fit into category D, as well-defined miRNAs.

The process for evaluating miRNAs and sorting the loci into the categories mentioned above primarily involved three criteria, including their abundance, abundance ratio, and strand ratio (Jeong et al., 2011). The abundance was calculated by

examining the count of reads from the two most abundant small RNAs (“top1+top2”) matching each miRNA locus which, for a real miRNA, would typically represent the two strands of the miRNA duplex. The overall summed abundance of 530 miRNAs ranged from as low as 1 TP5M to the highest abundances of 44.1 million TP5M (the two most abundant sequence variants of miR166) and 36.9 million TP5M (miR1507). We designated 191 miRNA precursors as “weakly expressed” loci; these had matched read abundances <924 TP5M, lower than 95% of the conserved miRNA loci (Supplemental Data Set 1B). For the second criterion, the abundance ratio, we examined the ratio of abundances between two most abundant small RNAs (top1+top2) and all small RNAs matching each miRNA locus, while for the third criterion, strand bias, for each stem-loop we divided the summed abundance of small RNA sequences from the sense strand by those from both strands. Among the conserved miRNAs, 95% had an abundance ratio of 0.565 or higher, whereas only 17.5% of nonconserved miRNAs had abundance ratios of 0.565 or higher (Supplemental Data Set 1B). Following Jeong et al. (2011), we designated miRNA loci with abundance ratios of less than 0.4 as “siRNA-like” miRNA loci and those with ratios between 0.4 and 0.5 as “marginal” miRNA loci, consistent with the examples shown in Supplemental Figure 3. In addition, 95% of conserved miRNA precursors had strand ratios of 0.978 or higher, while only 23% (71/299) of nonconserved miRNAs fit this value. We considered miRNA precursors with strand ratios of less than 0.8 as “siRNA-like” miRNAs and those with a ratio between 0.8 and 0.9 as “marginal miRNAs.” Integrating the second and third criteria, we were able to classify 312 miRNAs as typical miRNAs, 203 miRNAs as siRNA-like miRNAs, and 15 miRNAs as marginal miRNAs; this set of 312 miRNAs included the 191 weakly expressed miRNAs defined from the first criterion (Supplemental Data Set 1B). The majority of miRNAs in the “typical miRNA” class were 21 and 22-nucleotides in length, whereas the “siRNA-like” class was rich in annotated miRNAs with a size of 24 nucleotides (Supplemental Data Set 1B). This latter group of siRNA-like, 24-nucleotide miRBase miRNAs is likely incorrectly annotated.

### Identification of Novel miRNAs and miRNA Variants in Soybean

In addition to the reevaluation of previously reported miRNAs, we also used the small RNA data to identify novel miRNAs and to annotate miRNA variants. The pipeline used for the identification of novel miRNAs was adapted from Jeong et al. (2011) (Supplemental Figure 4). Using 124,526,477 distinct reads after excluding t/r/sn/snoRNAs, all genome-matched reads between 18 and 26 nucleotides were filtered for read abundance, to include only those  $\geq 50$  TP5M in at least one library. The reads that mapped to more than 20 locations in the soybean chromosomes were also discarded as too repetitive to be miRNAs. Of the 124,526,447 reads, there were 29,133 sequences that passed the first filter set, including 198 sequences that matched to the known miRNAs. The candidate precursors that passed the first filter set were analyzed by miREAP (<https://sourceforge.net/projects/mireap>) as described by Jeong et al. (2011). In all, 2523 sequences corresponding to 4047 precursors were obtained. Of the 198 reported miRNAs, only 120 passed this second filter.

The third filter set then was used to evaluate the single-strand bias (sense/total  $\geq 0.9$ ) and an abundance bias ( $(\text{top1} + \text{top2})/\text{total} \geq 0.7$ ) to yield only one or two most prominent miRNAs for each given precursor. In total, 180 small RNA sequences corresponding to 361 precursors passed this filter, including 71 known miRNAs. The fourth filter was applied in order to identify only high quality stem-loop structures, analyzed using CentroidFold (Sato et al., 2009). A total of 151 candidates from 332 precursors passed this filter; all of the 71 known miRNAs from the previous step also passed. Among the 71 known miRNAs, we found 44 variants compared with the miRNAs registered in miRBase (Supplemental Figure 4). After excluding known miRNAs, 22 high-confidence candidates were designated as novel miRNAs (Supplemental Data Set 1C). We also identified miRNA variants by comparing the small RNA reads with those registered in the miRBase (Supplemental Data Set 1D). We found  $\sim 20$  sequences that varied in length and/or contained nucleotide substitutions relative to the miRNAs registered in miRBase. The length of these miRNA variants varied from 19 to 24 nucleotides, including one- to four-nucleotide substitutions. There were also 10 novel miRNAs identified from different locations on the same precursors of the previously reported miRNAs (Supplemental Data Set 1D). Thus, we were able to identify a large number of new and known soybean miRNAs from our data set.

#### Differentially Abundant miRNAs Across Soybean Tissues and Treatments

An assessment of differential abundance counts was performed for the novel and known miRNAs and variants across all 69 small RNA libraries. Hierarchical clustering (Eisen et al., 1998) of our data revealed that many miRNAs demonstrate tissue-preferential accumulation. We selected three sets of miRNAs for more detailed analysis. The first set was all novel miRNAs showing tissue-preferential levels (Figure 1A). Of 22 novel miRNAs, six were exclusively observed in seed tissues, including gma-miR10196, gma-miR10195, gma-miR10191, gma-miR10188, gma-miR10194, and gma-miR9756 (Figure 1A). Similarly, gma-miR10200 was enriched in nodules and gma-miR5030b was enriched in leaves. Several of these novel miRNAs were enriched in more than one tissue; i.e., gma-miR10201, gma-miR10186, gma-miR10198, gma-miR10193, and gma-miR9749 were enriched in both reproductive tissues and nodules (Figure 1A). The second set was miRNAs highly enriched in the reproductive tissues. This set included gma-miR395c, gma-miR395d, gma-miR395g, gma-miR169s, gma-miR156f, and gma-miR4392 (Figure 1B). Among the miRNAs that were preferentially observed in the flower tissues, a few of them showed high enrichment in anthers, i.e., gma-miR4392, gma-miR393l, and gma-miR167e. Intriguingly, gma-miR4392 was highly abundant in reproductive tissues, especially in anthers, but nearly absent in other tissues (Figure 1B, and analyzed in more detail below). There were also miRNAs preferentially present in reproductive tissues as well as in nodules, i.e., miR172c, miR159b, and miR395g (Figure 1B). The last set of miRNAs that were observed in a tissue-preferential manner comprised those strongly present in developing nodules but sparingly in other tissues. These included miR171b, miR171r, miR159f, miR172d, and miR4394-5p (Figure 1B). Not fitting into any of our three sets was a

number of miRNAs enriched in seed tissues, i.e., gma-miR176e/f and gma-miR1512c. These seed-specific miRNAs were well described in the original study from which they were derived (Zabala et al., 2012).

miRNAs within a family accumulated differentially across tissues; for example, the large miR171 family, which contains 22 members, shows a rich diversity of abundance patterns (Supplemental Figure 5). Some were nodule-enriched, i.e., gma-miR171s, gma-miR171r, and gma-miR171b-3p, while others were both flower- and leaf-enriched. Processing variants of miRNAs from a single precursor also accumulated differently; the variant gma-miR156c.2 was highly abundant in cotyledon, whereas gma-miR156c.1 was absent (Supplemental Data Set 1D). gma-miR156c is in most or all tissues, but preferentially expressed in seed coat tissues. Similarly, gma-miR3522.1 was identified preferentially in seed tissues and leaf tissues, while gma-miR3522 was measurable only in seed tissues and at low levels (Supplemental Data Set 1D).

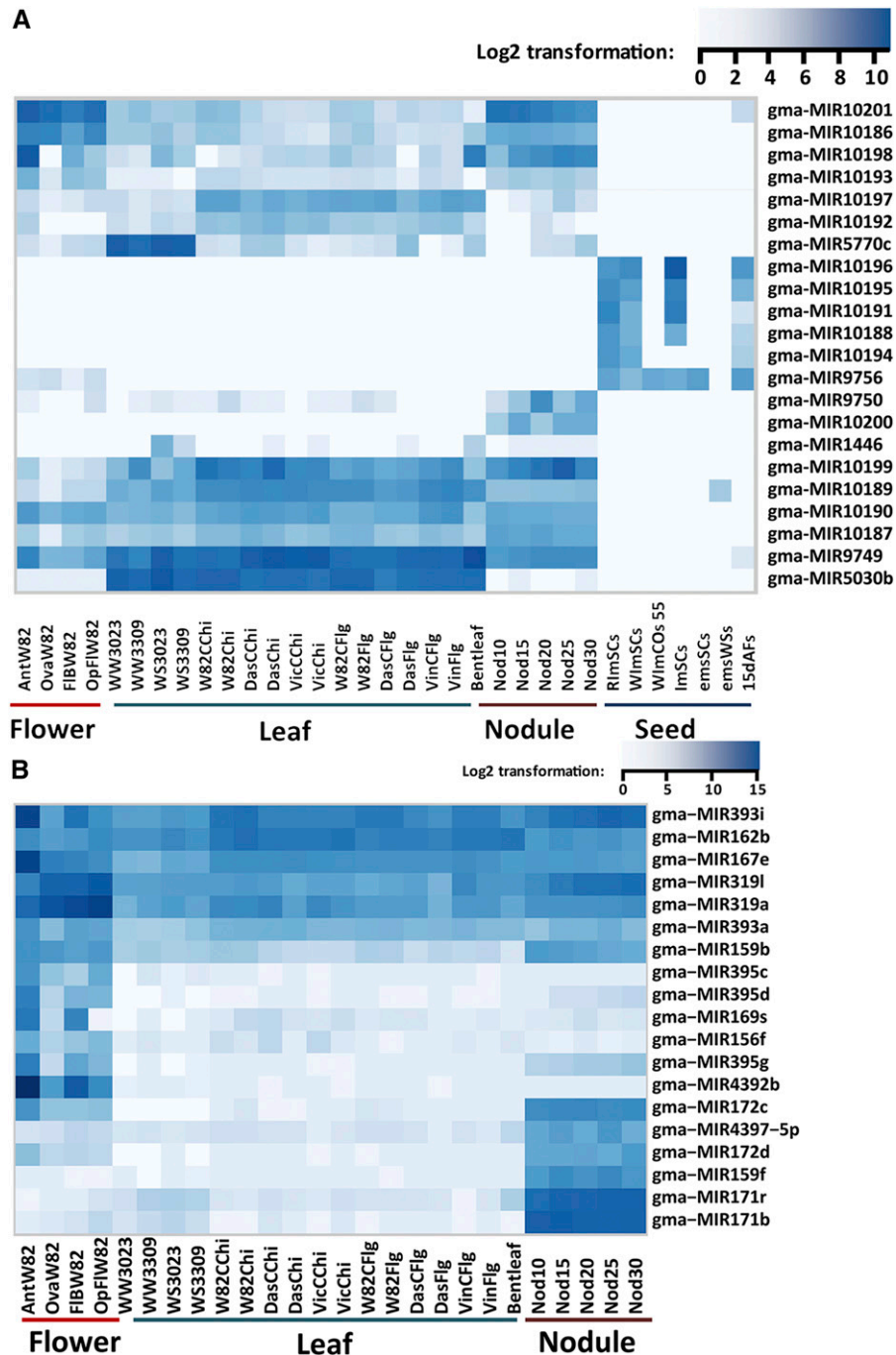
We next identified miRNAs differentially expressed in stress treatments. This was done using the R package baySeq (Hardcastle and Kelly, 2010), with a likelihood of  $\geq 0.95$  and false discovery rate at  $< 0.01$ . With this cutoff, no miRNAs were differentiated in water-stressed leaves of two genotypes (IA3023 and LD003309); however, the closest was gma-miR1446, enriched in drought-stressed leaves (Supplemental Data Set 1E; Figure 1A). We found nine miRNAs upregulated in the flagellin-treated Dassel genotype, perhaps mimicking biotic stress (Supplemental Data Set 1E), while we were unable to identify any differentially expressed miRNAs resulting from chitin treatments. Across our libraries, differential miRNAs were much more enriched comparing tissues than treatments.

#### miRNA Target Verification Using PARE Libraries

Experimental verification of miRNA-directed target cleavage is rapid and precise using PARE data (Addo-Quaye et al., 2008; Gregory et al., 2008; German et al., 2009; Zhai et al., 2011; Jeong et al., 2013). We constructed PARE libraries from flower, leaf, and nodule tissues and utilized public PARE data for seeds, comprising over 65 million distinct reads (Supplemental Data Set 1F). Among the PARE-validated targets of soybean miRBase-annotated miRNAs, we verified 392 targets for 263 miRNAs, most of which are typical miRNAs. Of these, 261 overlapped with annotated protein-coding genes, with the remainder in intergenic regions or unannotated genes (Supplemental Data Set 1G). The number of targets per miRNA ranged from one to 23. Among novel miRNAs and variants, nine targets were identified for eight novel miRNAs and 129 targets were identified for the 33 new miRNA variants. Of these, 8 and 86 targets for the novel miRNAs and new miRNA variants, respectively, overlapped with annotated genes and the remainder localized to intergenic regions (Supplemental Data Set 1H), which could be unannotated genes or noncoding transcripts like *TAS* loci.

#### Genome-Wide Identification of Loci Generating Phased siRNAs and Their Triggers

Plant loci producing phased, secondary siRNAs, so-called *PHAS* loci, include both protein-coding and noncoding transcripts; the



**Figure 1.** Expression Profiling of Novel and Tissue-Preferential miRNAs.

(A) Novel miRNAs identified in this study included many with enriched abundances in specific tissues or organs.

(B) Analysis of previously described soybean miRNAs also reveals a range of tissue preferences in flower, leaf, and nodule.

legume *M. truncatula* is a rich source of such loci (Zhai et al., 2011), with variable numbers of loci in other plant species (Fei et al., 2013). We combined all 69 small RNA libraries to identify soybean *PHAS* loci and subsequently assess their miRNA triggers via a process of reverse computation (Xia et al., 2013). We identified 504 genomic *PHAS* loci at a phasing P value  $\leq$

0.001, a stringent threshold (Figure 2A; Supplemental Data Set 1l) (Chen et al., 2007). Of these, 483 (95.8%) overlapped annotated protein-coding genes. The primary class of *PHAS* loci (208 or 41.0% of the total) corresponded to *NB-LRR* genes, which encoded 79 Toll interleukin 1 receptor (*TIR*)-*NB-LRRs*, five coiled-coil (*CC*)-*NB-LRR*, and 89 other *NB-LRRs* (Figure

2A). These *phasi-NB-LRRs* (*pNLs*) accounted for 65% (208/319) of all *NB-LRRs* identified in the soybean genome, including those identified by Kang et al. (2012), plus another 35 *phasi-NB-LRR* genes identified using the GreenPhyl DB (<http://www.greenphy.org>) (Supplemental Data Set 1). The majority of *pNL* loci were clustered on chromosomes 3, 6, 13, 15, and 16, which contained 30, 21, 15, 14, and 40 *pNLs* (Figure 2C). The level of *phasiRNAs* differed among *pNLs*, with some showing high levels of *siRNAs* across all analyzed tissues, but others accumulating in a particular tissue, like nodules (Figure 2B). Many receptor-like kinase-encoding genes also generate *phasiRNAs*, but these were only a small fraction (25 loci) of the ~600 receptor-like kinase genes known in soybean (Liu et al., 2009). In *Arabidopsis*, the major group of protein-coding *PHAS* genes is pentatricopeptide repeat-containing proteins (Howell et al., 2007), but in soybean we found only 15 pentatricopeptide repeat-encoding *PHAS* loci. Several diverse families of transcription factors accounted for 15% of the *PHAS* loci (Figure 2A), including 18 *PHAS* loci from the Aux/IAA and auxin response factor families (AUX-IAA-ARF), 10 *PHAS* loci in the APETALA2 and ethylene-responsive element binding protein (AP2-EREBPs) gene families, and another 10 *PHAS* loci from genes encoding MYB/HD-like proteins (Figure 2A). Genes involved in small RNA biogenesis, i.e., *DCLs* (five loci), *SUPPRESSOR OF GENE SILENCING3* (three loci), and *AGO2* (one locus), were also among the soybean *PHAS* loci, suggesting feedback regulation may occur. Finally, a large number (126) of *PHAS* loci overlapped with genes of unknown function, many of which are single copy in the genome, suggesting *cis*- rather than *trans*-activity (Figure 2A; Supplemental Data Set 1). As a set, the 504 soybean *PHAS* loci was significantly larger than but included all of those that we previously identified (41 loci) in soybean (Zhai et al., 2011) due to our much broader and deeper set of new data.

Distinct from protein-coding genes, one group of 21 *PHAS* loci was predicted to be noncoding. This included six *TAS3*-like loci and an unnamed *TAS*-like locus previously reported (Xia et al., 2013). Two *TAS3* loci (*TAS3a* and *TAS3b*) were highly abundant and in most respects quite similar to those of *Arabidopsis*, whereas the additional four *TAS3* paralogs (*TAS3c-f*) varied in *phasiRNA* abundance, sequence conservation, or trigger arrangements (Figure 3). *TAS3c* and *TAS3d* produced few *phasiRNAs* with the exception of floral tissues (Figure 3A); *TAS3a* and *TAS3b* accumulated robustly in most tissues, with an abundance gradient over the progression of nodule development (Figure 3A). *TAS3e*- and *TAS3f*-derived *phasiRNAs* were undetectable in nodules (Figure 3A). In addition, we also found a noncoding *PHAS* locus that produced *phasiRNAs* exclusively in anthers, as described below.

*PhasiRNA* biogenesis is typically initiated by target cleavage via an AGO-loaded miRNA trigger, recruiting RDR6 to synthesize dsRNA, the substrate that DCL4 processes into phased 21-nucleotide sRNAs. To identify the miRNA triggers of the *PHAS* loci, we integrated the soybean miRNAs and PARE data (Xia et al., 2013). This identified 20 miRNA triggers of 127 *PHAS* loci, with each trigger targeting one to 20 loci (Supplemental Data Set 1). Three miRNAs triggered more than 10 *PHAS* loci, including gma-miR167e (triggering 10 *PHAS* loci), gma-miR2109 (11 loci),

and gma-miR1510b-3p (20 loci); the former targets the ARF6 and ARF8 transcription factors and the latter two primarily trigger *pNLs*. Finally, we observed that a feature observed in *Arabidopsis* miRNAs that trigger *phasiRNA* biogenesis, precursors with an asymmetric bulge stem-loop (Manavella et al., 2012), was absent for many of the miRNA triggers that we identified (Supplemental Figure 6).

### The Novel Loci and Phasing Patterns of *TAS3*

In plants, many phased loci are triggered by a one-hit 22 nucleotide miRNA ( $1_{22}$ ), with the production of *phasiRNAs* downstream of the cleavage site (Chen et al., 2010; Cuperus et al., 2010); this was also true for the phased loci in soybean that we identified (Supplemental Data Set 1). *TAS3* loci are conventionally triggered by miR390 binding at two sites via the two-hit ( $2_{2+}$ ) pathway, triggering *tasiARF* production (Axtell et al., 2006). Conserved *tasiARFs* were produced from all six soybean *TAS3* loci: two produced from *TAS3a/b* [5'7D(+) and 5'8D(+)] and only one (5'7D(+)) from *TAS3c/d/e/f* (Figure 3B). There was a single nucleotide variant (C-to-U) found at positions 9 and 10 of the *tasiARF* GmTAS3c-5'7D(+) and GmTAS3d-5'7D(+) (Figure 3B). Four of the six soybean *TAS3* loci, *TAS3a/b/c/d*, had target sites consistent with the canonical two-hit model (Figure 3C); the other two, *TAS3e* and *f*, were atypical. *TAS3e* has three gma-miR390 binding sites, essentially a three-hit locus, with the middle site cleaved to initiate downstream processing and 5'8D(+) production (Figure 3C). Relative to *Arabidopsis TAS3*, soybean *TAS3e* has a noncanonical phasing direction, downstream rather than upstream of the site cleaved by the 21-nucleotide gma-miR390. Similarly, the phasing in *TAS3f* is downstream of the 5' miR390 target site, but the position and number of gma-miR390 binding sites is typical of *TAS3* loci (Figure 3C).

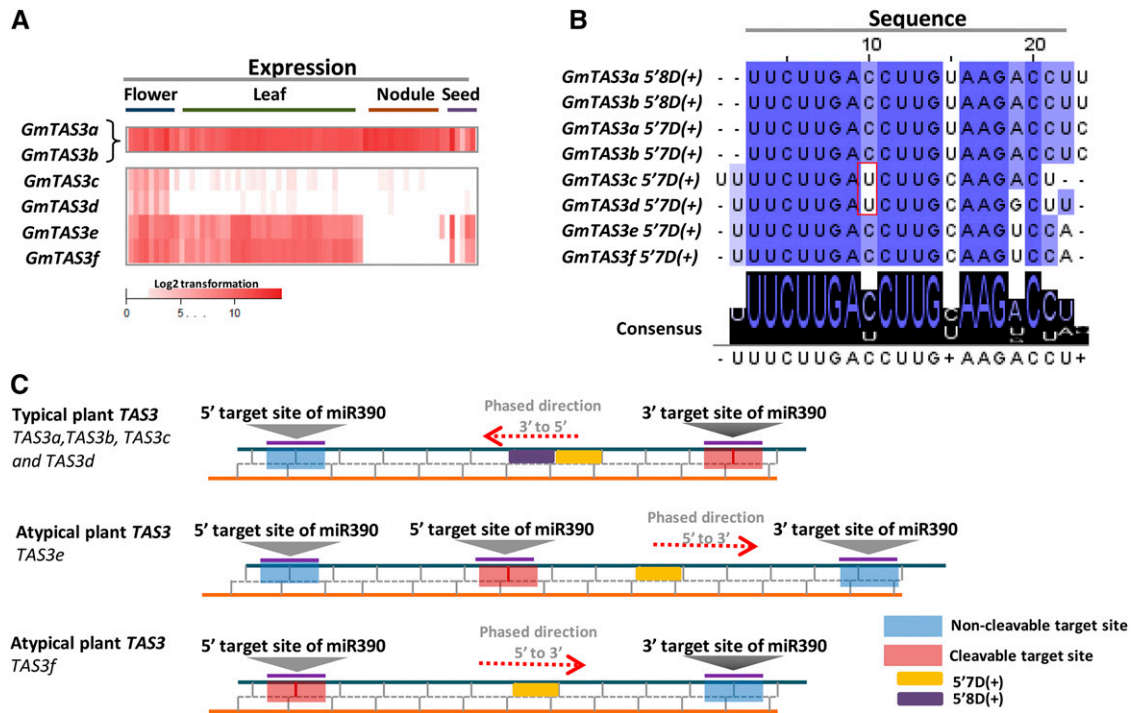
Our data also demonstrate that *tasiRNAs* can function in two-hit biogenesis to trigger additional secondary *siRNAs*. The *tasiARFs* from *TAS3* target and cleave transcripts from the *ARF3/ETT* and *ARF4* genes (Allen et al., 2005; Williams et al., 2005; Fahlgren et al., 2006; Hunter et al., 2006; Marin et al., 2010). In soybean, transcripts of *ARF3/ETT* (Glyma13g24240) and *ARF4* (Glyma12g07560) were not only cleaved by the *tasiARFs* GmTAS3a,b 5'7D(+) and GmTAS3a,b 5'8D(+), but the *ARF* targets also produced *phasiRNAs* (Figure 4A; Supplemental Figure 7). Thus, both *tasiARFs* are *phasiRNA* triggers, as evidenced by processing downstream from the cleavage site using the  $2_{21}$  pathway. More significantly, this demonstrates that *siRNAs* can also function as *phasiRNA* triggers via a two-hit mechanism of biogenesis (Figure 4B).

### *PhasiRNAs* with Differential Expression in Different Tissues and Treatments

A number of *phasiRNAs* were expressed preferentially or exclusively in a particular tissue or treatment (Table 1). These analyses were based on our data from leaf, floral parts, and nodule and seed tissues. The *phasiRNAs* preferentially expressed in flower tissues identified six protein-coding *PHAS* loci and five non-protein-coding *PHAS* loci, including *TAS3c* and *TAS3d*, and three other novel noncoding loci (Table 1). Two of the six







**Figure 3.** Triggers and Processing Mechanisms of Soybean *TAS3* TasiRNAs.

**(A)** The patterns of abundance in flower, leaf, nodule, and seed tissues for the summed total of tasiRNAs from each of the six *TAS3* loci present in the soybean genome. *TAS3a* and *TAS3b* are identical and thus cannot be measured separately.

**(B)** TasiARFs derived from *TAS3a/b/c/d/e/f*. The validated targets for all of the *TAS3* 5'8D(+) and 5'7D(+) siRNAs were all in the family of auxin response factors (ARFs), consistent with their relatively well conserved sequences (data not shown).

**(C)** Two or three miR390 target sites exist at soybean *TAS3* loci, and the direction of phasing relative to these target sites suggests a noncanonical processing direction for siRNAs triggered by a 21-nucleotide miRNA at *TAS3e* and *TAS3f*.

flower-enriched, protein-coding *PHAS* loci, Glyma05g07870 and Glyma17g13150, encode arogenate dehydrogenase, an enzyme responsible for the synthesis of tyrosine (Figure 5A). PhasiRNAs from these loci also matched to a long-stemmed, hairpin-forming, unannotated region of the genome (Figure 5B). A BLASTX similarity search of this transcript against soybean proteins revealed high similarity to a portion of the arogenate dehydrogenase-encoding genes, but with an open reading frame interrupted by stop codons suggesting that the hairpin transcript is a gene fragment. This locus and the two closely related arogenate dehydrogenase genes (a subset of seven soybean arogenate dehydrogenase-encoding loci), are robust sources of phasiRNAs (Supplemental Figure 8). While the phasiRNAs from these two arogenate dehydrogenase genes were anther specific, the two protein-coding homologs were expressed in other tissues without the accompanying

production of phasiRNAs, indicating the phasiRNA trigger is absent from those tissues (Figure 5C). Thus, one model for the biogenesis of these phasiRNAs that is consistent with these data is that the pseudogene hairpin is directly processed by a Dicer protein to generate siRNAs that could function in *trans* as triggers of secondary siRNAs from the protein-coding genes, with the hairpin mRNA expression restricted to the anthers (Figure 5B).

Numerous other *PHAS* loci showed tissue enrichment or specificity. A set of phasiRNAs preferentially expressed in nodules was produced from *NB-LRR* genes, genes known for their role in disease resistance (Table 1). Such phasiRNAs could suppress disease resistance in nodules, promoting symbiotic interactions. Seed-preferential phasiRNAs were derived from five protein-coding and a noncoding locus; two of the former, Glyma05g04900 and Glyma17g15270, encode MYB DOMAIN

**Figure 2.** (continued).

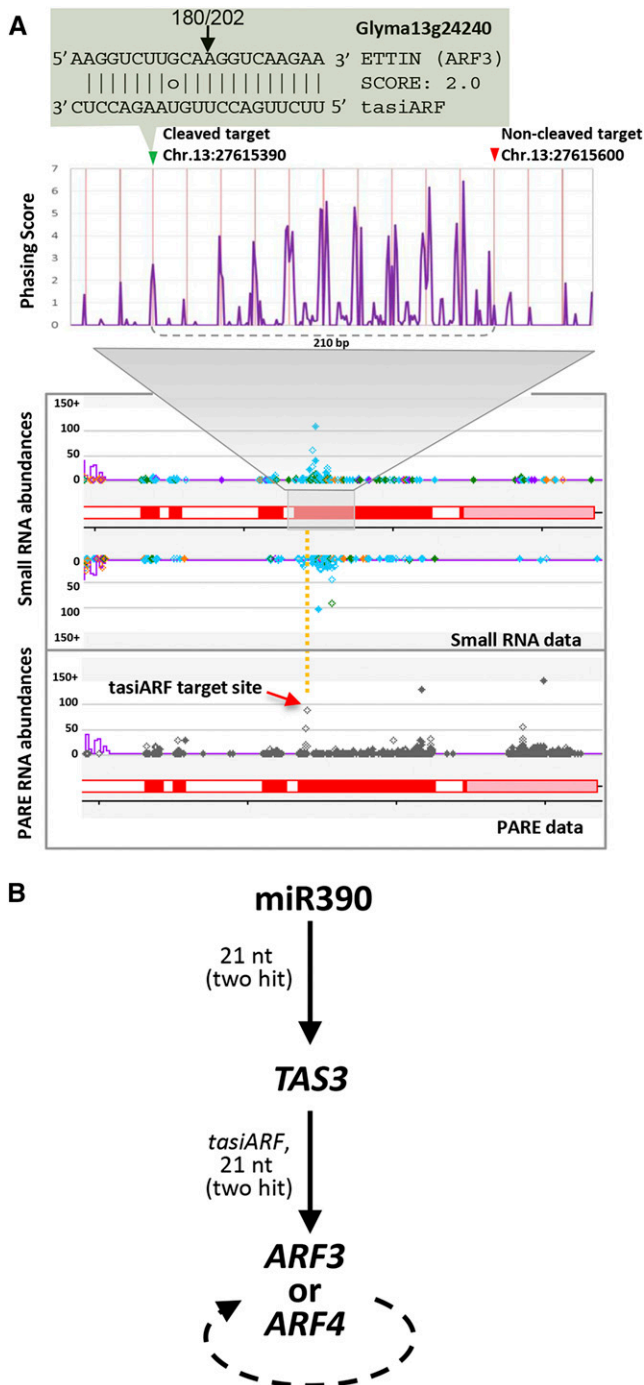
The soybean genome contains more protein-coding loci generating phasiRNAs than has been described for any other plant genome.

**(A)** Categories and numbers of coding *PHAS* loci.

**(B)** Expression profiling and hierarchical clustering of *PHAS* genes in the *NB-LRR* family.

**(C)** Distributions and clusters of *phasi-NB-LRR* genes in the soybean genome.





**Figure 4.** The *ARF3* *PHAS*-Locus Triggered by the TasiARF.

**(A)** The soybean *TAS3*-derived tasiARFs target *ARF3* at two identical sites, a 5' site for which cleavage was validated by PARE (bottom panel) and a 3' site for which no cleavage was observed. This two-hit activity of the tasiARFs generated phased siRNAs (middle panel). The y axis is a phasing "score" that is an estimated P value for the significance of phasing (see Methods). The lower two images are our Web browser showing the small RNA (middle) or PARE data (lower), with the orange dashed line indicating the tasiARF cleavage site. Colored spots are small RNAs with abundances indicated on the y axis; light blue spots indicate

PROTEIN5 (MYB5) and are triggered by miR828, exclusively expressed in seed tissues (Supplemental Figure 9). MYB5 has been reported previously to be involved in differentiation of the outer seed coat (Gonzalez et al., 2009) and anthocyanin biosynthesis (Dubos et al., 2010; Abeynayake et al., 2012), whereas miR828 in *Arabidopsis* functions to generate MYB-targeting tasiRNAs from *TAS4* (Rajagopalan et al., 2006). Thus, relative to soybean, the *Arabidopsis* *TAS4* locus may have evolved to separate the miR828-dependent phasiRNA generation and MYB suppression activities.

We identified one interesting pair of novel noncoding *PHAS* loci that were specific to the reproductive tissues and triggered by gma-miR4392, a previously poorly characterized miRNA (Figure 6). gma-miR4392 was particularly enriched in anthers (Figure 1B). Unusually, MIR4392, the locus generating the trigger, is arranged immediately adjacent to one of the *PHAS* loci that it targets, on chromosome 20 (Figure 7A). We found a homoeologous region on soybean chromosome 9 that also contains MIR4392; however, this copy is likely a pseudogene, since it was not expressed in any tissue analyzed in our study, suggesting a divergence in the ~13 million years since these regions were duplicated. To assess the conservation of this arrangement in legumes, we identified the syntenic region between soybean and common bean (*Phaseolus vulgaris*; Figure 7B). MIR4392 was not present within this syntenic region or throughout the genome of common bean. This suggests that the adjacent arrangement of MIR4392 and the *PHAS* locus emerged in soybean in the 20 million years since the divergence of these species. We next searched for the putative targets of 39 of the most abundant phasiRNAs to infer their function. The best matches were to hundreds of LTR transposable elements (TEs; Figure 7A; Supplemental Data Set 1J). However, the locus itself is single copy, as are the phasiRNAs, despite their TE-targeting capability. Thus, these two *PHAS* loci may have a specialized function to regulate TE activity during plant reproduction.

Finally, we examined *PHAS* loci showing an abundance graduated over developmental stages or treatment time points. Developmentally varied *PHAS* loci included the tasiARFs from *TAS3a* and *TAS3b* that were highly abundant in the early stage (10 d) of nodule development and gradually reduced in later stages (Supplemental Figure 10), consistent with the abundance of the trigger, miR390. The only *PHAS* locus showing a gradient over the treatments was the drought-responsive locus Glyma11g13070 encoding allene oxide synthase (AOS). PhasiRNAs from this locus accumulated in the leaf tissues subjected to drought stress in both tolerant and susceptible

21-nucleotide sRNAs, green are 22-nucleotide sRNAs, orange are 24-nucleotide sRNAs, and other colors are other sizes. Red boxes are annotated exons (pink are untranslated regions). Purple lines indicate a k-mer frequency for repeats.

**(B)** The data from panel A suggest a cascade of two-hit phased siRNA biogenesis in which the 21-nucleotide (nt) miR390 triggers 21-nucleotide tasiARF biogenesis, and via a two-hit mechanism, the tasiARFs trigger the production of additional secondary siRNAs from *ARF3* and *ARF4* (see Supplemental Figure 7 online). The *ARF* siRNAs may function in *cis* or *trans*.

**Table 1.** List of *PHAS* Genes Specific to Tissues or Treatments

Tissue/Treatment	Gene ID or Locus Coordinates	Annotation
Flower	Glyma08g04910	ATP binding
	Glyma08g06400	Armadillo/ $\beta$ -catenin repeat family protein
	Glyma05g07870	Arogenate dehydrogenase
	Glyma17g13150	Arogenate dehydrogenase
	Glyma14g04800	UDP-glucuronosyl/UDP-glucosyl transferase family protein
	Glyma13g00630	Cadmium ion transmembrane transporter
	Chr17:5607065:5607900	TAS3c
	Chr13:1198656:1199379	TAS3d
	Chr2:9271806:9271913	Noncoding RNA
	Chr20:158383:158404	Noncoding RNA
Seed	Chr9:45231347:45231516	Noncoding RNA
	Glyma02g13520	Heat shock protein binding
	Glyma05g04900	MYB DOMAIN PROTEIN5
	Glyma17g15270	MYB DOMAIN PROTEIN5
	Glyma11g33110	ACYL ACTIVATING ENZYME12
	Glyma18g05110	BENZOYLOXYGLUCOSINOLATE1; benzoate-CoA ligase
Nodule	Chr18:60823864:60824073	Noncoding RNA
	Glyma10g01140	DNA binding protein-related
	Glyma12g03040	Disease resistance protein (TIR-NB-LRR class), putative
	Glyma15g39460	Disease resistance protein (CC-NB-LRR class), putative
	Glyma15g39620	Disease resistance protein (NB-LRR class), putative
Drought	Glyma15g39660	Disease resistance protein (CC-NB-LRR class), putative
	Glyma11g13070	ALLENE OXIDE SYNTHASE; allene oxide synthase

genotypes. AOS is a member of the large CYP74 cytochrome P450 family and converts lipoxygenase-derived fatty acid hydroperoxide to allene epoxide, the first dedicated step in jasmonate synthesis. AOS is upregulated in drought stress in barley (*Hordeum vulgare*) (Talamè et al., 2007).

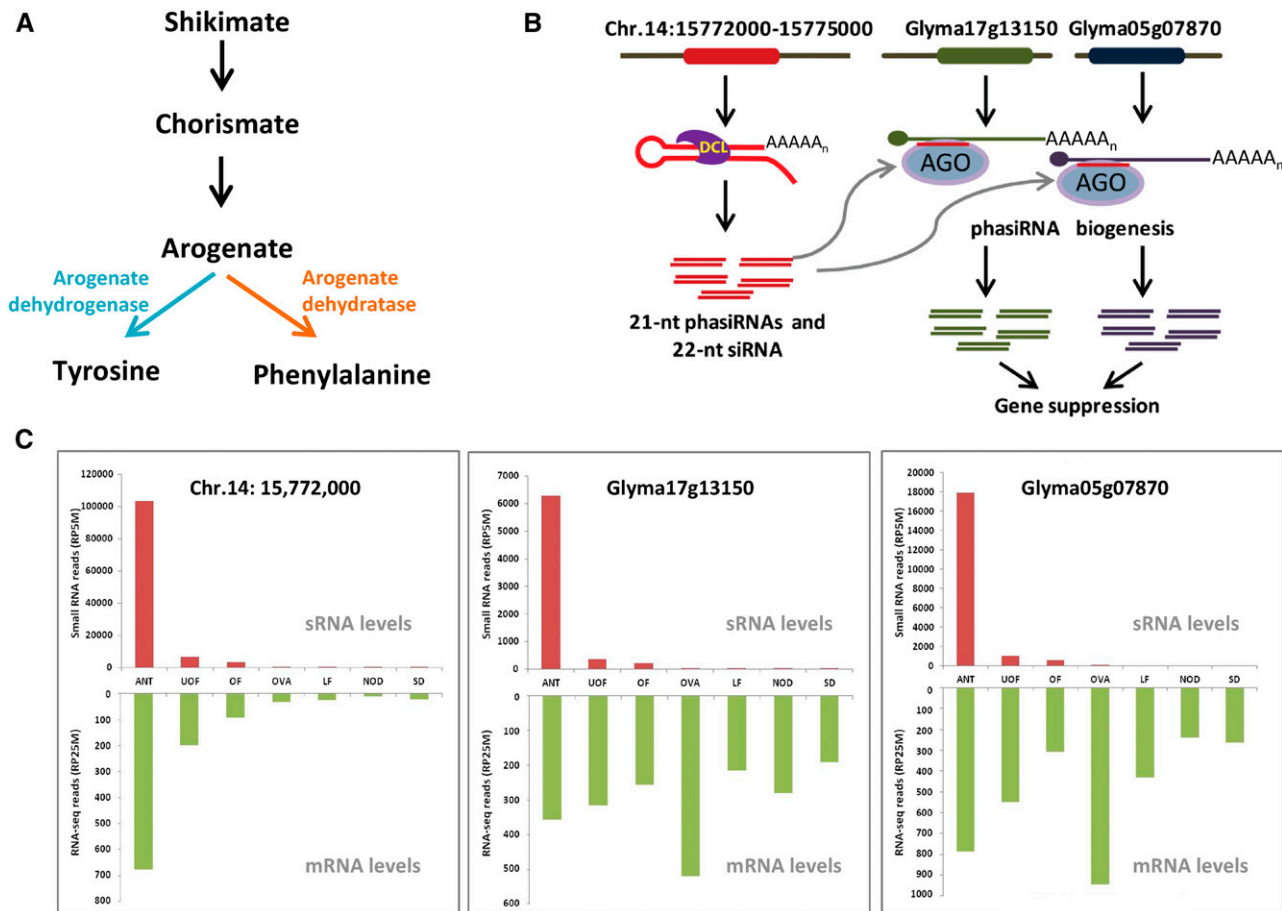
## DISCUSSION

We analyzed an extremely large set of small RNAs (>1.9 billion sequences or >1 billion after filtering structural RNAs) generated from various tissues, developmental stages, and treatments of soybean. With these data, we generated an “atlas” of soybean small RNAs. Applying three criteria, abundance, the abundance and strand ratios to the current set of miRBase-annotated miRNAs (miRBase v20), we found that 312 MIRNA loci produce typical miRNAs, while another 203 produce small RNAs more reminiscent of siRNAs with a 24-nucleotide length. An additional 191 annotated miRNAs were weakly abundant and poorly conserved, comparing soybean and *Arabidopsis*. These poorly accumulating miRNAs were also poorly conserved among legume species (miRBase v20), suggesting that they are soybean specific (Supplemental Data Set 1K). Our analysis of variation in sizes and abundances identified many miRNAs of different sizes than those registered in miRBase, and different variants of the same miRNA accumulated divergently. Thus, we believe that these results can substantially improve the miRBase data for soybean.

We used a statistically rigorous method to identify hundreds of *PHAS* loci in soybean, an approach used with increasing frequency to discover large numbers of such loci (Fei et al., 2013). While soybean *PHAS* loci have been described previously (Zhai et al., 2011), we had ~50-fold deeper data (>1 billion small RNAs), generating the greatest number of *PHAS* loci (504

described for any dicot. All previously reported soybean *PHAS* loci overlapped with those reported here. Twenty different miRNA triggers were identified for 127 *PHAS* loci, leaving the triggers unverified for the majority, perhaps due to low precursor expression and a corresponding lack of abundant PARE reads. Alternatively, the triggers might be other phasiRNAs, not miRNAs (such as the case of tasiARFs that we described), and comprehensive target assessment of the many thousands of phasiRNAs is at present computationally challenging. Many *PHAS* loci in the same gene family shared miRNA triggers, and in many of those cases, this was because the binding sites are in conserved domains. For example, gma-miR1510b-p targets 20 *NB-LRR* genes at the core P-loop-encoding motif (Zhai et al., 2011).

Among the most intriguing of observations we made is the large number of 21-nucleotide triggers of phasiRNAs. Previous reports show that a 22-nucleotide length plus an asymmetric bulge in the precursor shunts a target mRNA into the  $1_{22}$  phasing pathway (Chen et al., 2010; Cuperus et al., 2010; Zhai et al., 2011; Manavella et al., 2012). Of 20 miRNA triggers, we found 14 of them are a conventional 22-nucleotide in length; the remainder are 21 nucleotides, an unconventional length for *PHAS* triggers. Manavella et al. (2012) demonstrated that 21-nucleotide miRNAs are competent to trigger secondary siRNA production when derived from an asymmetrically bulged miRNA/miRNA\* duplex. However, 10 of the miRNAs that trigger phasiRNAs had no bulge in the precursor stem-loop (Supplemental Figure 6B). One possibility is that these miRNAs trigger phasiRNAs via the two-hit pathway, a pathway almost exclusively represented by miR390-*TAS3* (Axtell et al., 2006) and, more recently, an *AP2* gene triggered by miR172/miR156 (Zhai et al., 2011). It remains to be determined whether all of these soybean two-hit loci would involve the canonical AGO protein for miRNA



**Figure 5.** Anther-Specific PhasiRNAs Derived from Arogenate Dehydrogenase Loci.

**(A)** The biochemical pathway in which arogenate dehydrogenase is involved.

**(B)** Schematic pathway of phasiRNA production from arogenate dehydrogenase-related loci. At left, a gene fragment that forms a hairpin is processed into phasiRNAs.

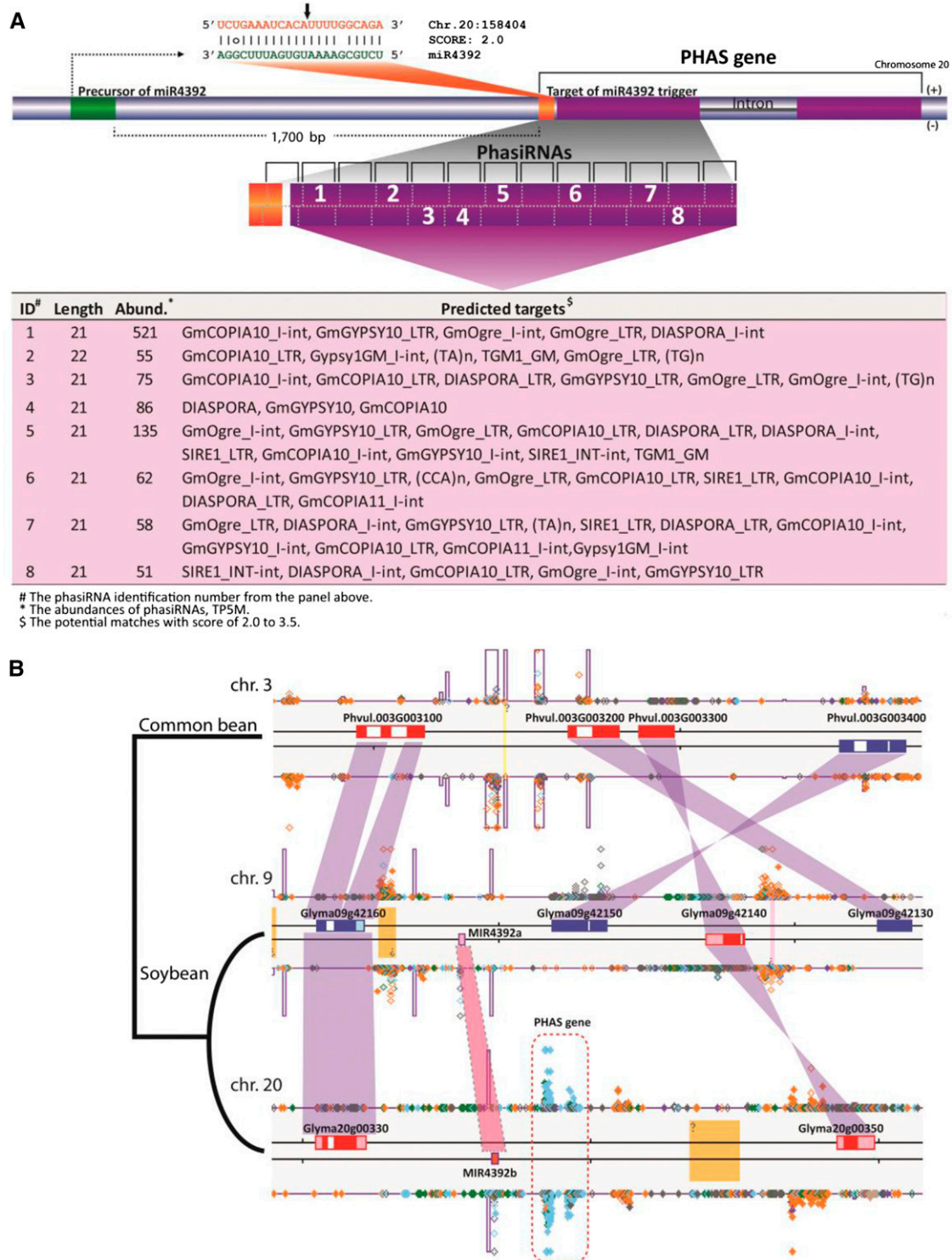
**(C)** The levels of read abundances for miRNA triggers and phasiRNAs derived from the two arogenate dehydrogenase *PHAS* genes in different tissues (red bars) and the levels of gene expression (green bars) are shown as values normalized into RP5M (read per five million) and RP25M (read per 25 million), respectively.

binding (AGO1) or the only AGO known to function in the two-hit pathway (AGO7). The 5' nucleotide has a role in sorting of individual sRNAs into specific AGOs in plants (Mi et al., 2008; Takeda et al., 2008), with 22-nucleotide, 5'U *PHAS* triggers associated with AGO1 (Cuperus et al., 2010). Most of the triggers identified in this study, including three 21-nucleotide triggers, have a "U" in the 5'-terminus, potentially loaded into AGO1. It is possible that of the 21-nucleotide 5'U miRNAs triggering phasiRNAs, a small portion of 22-nucleotide variants are also produced and act as the triggers of phasiRNA production. Another possibility is that the 21-nucleotide 5'U miRNAs are modified after processing (i.e., tailed) to 22 nucleotides to function as a trigger as recently reported by Zhai et al. (2013). In summary, our study suggests that the number and diversity of phasiRNAs and the diversity of miRNA triggers as well as their mode of action varies substantially between soybean and the model dicot *Arabidopsis*.

We identified 208 soybean *PHAS* loci that overlapped with *NB-LRR* genes, accounting for 41% of the total number of *PHAS* loci. *NB-LRRs* are the most numerous disease resistance gene (*R* gene) class in plants (Dangl and Jones, 2001), with as many as 653 *NB-LRR* genes in a genome (in rice) (Shang et al., 2009). A high number of *phasi-NB-LRR* genes has been observed in a number of dicots and as far back as gymnosperms, yet this mode of gene regulation is absent or largely diminished in several species, including *Arabidopsis* and rice (Källman et al., 2013). In soybean, 319 *NB-LRR* genes have been characterized (Kang et al., 2012); of these, and like the other well-studied legume *M. truncatula* (Zhai et al., 2011), the great majority produce 21-nucleotide secondary siRNAs. It was proposed that in the absence of a pathogen, phasiRNAs reduce *NB-LRR* expression and correspondingly the energetic cost to the plant (Shivaprasad et al., 2012). Alternatively, secondary siRNAs might limit runaway transcription of *NB-LRRs* in species with a rapidly expanding







**Figure 7.** Pollen-Specific PhasiRNAs Targeting Transposons from the *PHAS* Locus on Chromosome 20.

(A) A locus on chromosome 20 produces phasiRNAs that are specifically expressed in pollen. These phasiRNAs are triggered by miR4392, the precursor of which located immediately upstream, and also accumulates specifically in pollen. The targets of the most abundant phasiRNAs from the locus were predicted using conventional rules for miRNA target identification. As indicated in the table below, the predicted targets for all of the abundant phasiRNAs belong to a wide variety of transposable elements. The lower table lists phasiRNAs that are abundant and target 10 or more

**Table 2.** Secondary siRNA-Triggering miRNAs in Soybean

miRNA Trigger	Sequence	Length (nt) <sup>a</sup>	Targeted Gene Family
miR1507a	UCUCAUCCAUACAUCGUCUGA	22-nt miRNA	Disease resistance protein (NB-LRR class), putative EPR1 (EARLY-PHYTOCHROME-RESPONSIVE1)
miR1508a	ACUGCUAUUCCCAUUUCUAAAC	22-nt miRNA	Pentatricopeptide (PPR) repeat-containing protein
miR1509a	UUAAUCAAGGAAAUCACGGUCG	22-nt miRNA	Noncoding gene
miR1510b <sup>b</sup>	AGGGAUAGGUAAAACAACUACU	22-nt miRNA	Disease resistance protein (TIR-NB-LRR class), putative
miR1514a	UUCAUUUUUAAAAUAGGCAUUG	22-nt miRNA	No apical meristem (NAM) family protein
miR1515b	UCAUUUUGCGUGCAAUGAUCUG	22-nt miRNA	NTL9 (NAC transcription factor-like 9); transcription factor
miR160b <sup>b</sup>	UGCCUGGCUCUCCUGUAUGCCA	21-nt miRNA	DCL2 (DICER-LIKE2)
miR167e	UGAAGCUGCCAGCAUGAUCUUA	22-nt miRNA	ARF10 (AUXIN RESPONSE FACTOR10)
			ARF6 (AUXIN RESPONSE FACTOR6); transcription factor
			ARF8 (AUXIN RESPONSE FACTOR8); transcription factor
			Transcription elongation factor-related
miR169a <sup>b</sup>	CAGCCAAGGAUGACUUGCCGG	21-nt miRNA	NF-YA1 (NUCLEAR FACTOR Y, SUBUNIT A1); transcription factor
			NF-YA10 (NUCLEAR FACTOR Y, SUBUNIT A10); transcription factor
miR172a <sup>b</sup>	AGAAUCUUGAUGAUGCUGCAU	21-nt miRNA	RAP2 (RELATED TO AP2); DNA binding / transcription factor
			AP2 (APETALA2); transcription factor
			Transducin family protein/WD-40 repeat family protein
miR2109 <sup>b</sup>	UGCGAGUGUCUUCGCCUCUGA	21-nt miRNA	Disease resistance protein (TIR-NB-LRR class), putative
miR2118a	GGAGATGGGAGGGTCCGGTAAAG	22-nt miRNA	SGS3 (SUPPRESSOR OF GENE SILENCING3)
miR319g <sup>b</sup>	UUGGACUGAAGGGAGCUCCUUC	22-nt miRNA	TCP family transcription factor, putative
			TCP3; transcription factor
			TCP4 (TCP family transcription factor 4); transcription factor
miR390g <sup>b</sup>	AAGCUCAGGAGGGAUAGCGCC	21-nt miRNA	TAS3
miR393	UCCAAAGGGAUCGCAUUGAUCC	22-nt miRNA	ATCSLE1; cellulose synthase/ transferase, transferring glycosyl groups
			AFB2 (AUXIN SIGNALING F-BOX2); auxin binding
			TIR1 (TRANSPORT INHIBITOR RESPONSE1)
miR396e <sup>b</sup>	UUCCACAGCUUUCUUGAACUGU	22-nt miRNA	Long-chain fatty acid-CoA ligase family protein
			HSL1 (HAESA-Like 1); ATP binding
			Calcium-transporting ATPase
miR403a <sup>b</sup>	UUAGAUUCACGCACAAACUUG	21-nt miRNA	AGO2 (Argonaute 2); nucleic acid binding
miR482b	UCUUCUCCUACACCUCCCAUACC	22-nt miRNA	ATP binding
			Disease resistance protein (CC-NB-LRR class), putative
			Disease resistance protein (TIR-NB-LRR class), putative
			MEE32 (MATERNAL EFFECT EMBRYO ARREST32)
			RPS2 (RESISTANT TO PSYRINGAE2); protein binding
miR4392	UCUGCGAAAAUGGUAUUUCGGA	22-nt miRNA	Noncoding gene
miR828a <sup>b</sup>	UCUUGCUCAAAUGAGUAUUCCA	22-nt miRNA	ATMYB5 (MYB DOMAIN PROTEIN5); DNA binding

<sup>a</sup>nt, nucleotide.<sup>b</sup>No bulge in the stem-loop.

encoding a long-chain fatty acid CoA ligase (Table 2), functions in ROS scavenging (Bazin et al., 2013). The activity of these miRNAs to trigger phasiRNAs is consistent with complex post-transcriptional regulation in nodule development.

Two noncoding *PHAS* loci accumulated to very high levels in soybean anthers, the same tissue in which the trigger of both *PHAS* loci, miR4392, was highly enriched. While we were unable

to validate the result with PARE analysis, target prediction suggests that these phasiRNAs may target hundreds of LTR retrotransposons (Figure 7A). It is possible that they might have a similar role as recently described vegetative nucleus-derived siRNAs that regulate TEs in pollen (Slotkin et al., 2009; Creasey et al., 2014). In *M. truncatula*, we previously identified an unusual flower-enriched *PHAS* locus (Zhai et al., 2011). Despite

**Figure 7.** (continued).

transposon loci; the target data were selected from Supplemental Data Set 1J, which contains more details about these phasiRNAs. The abundance data are the sum of abundance for all the libraries described in this article.

**(B)** The syntenic region between soybean and common bean. Both MIR4392 and the *PHAS* locus are located on the chromosome 20 of soybean. The phasiRNA signals detected at the *PHAS* locus are indicated in the dotted rectangle. The MIR4392 pseudogene located in the duplicated region on the chromosome 9 of soybean is shown. No phasiRNA signal was detected in duplicated region on chromosome 9. The MIR4392 locus is absent in the synthetic region on the chromosome 3 of common bean. No phasiRNA signal was detected in the syntenic region of common bean. Genes located on the sense and antisense strands of the chromosomes are presented in red and blue, respectively.



numerous similarities including expression levels as measured by RNA-seq of the miRNA trigger and *PHAS* locus (Supplemental Figures 11A to 11C), the *PHAS* genes in *M. truncatula* and soybean are not orthologous, as evidenced in part by the different miRNA triggers. However, the adjacent arrangement of the trigger and the anther-specific *PHAS* locus observed in soybean (Supplemental Figure 11B) was entirely reminiscent of that found in *M. truncatula*, in which there are two adjacent *PHAS* genes (Supplemental Figure 11C). It is unclear whether the two *PHAS* genes in *M. truncatula* are pollen specific because the available data were based on the whole flowers (Zhai et al., 2011). However, the predicted targets of phasiRNAs generated from the *M. truncatula* *PHAS* genes are also TEs (Supplemental Data Set 1L), suggesting a mechanism conserved in legumes for the regulation of TEs during reproduction (see the model in Supplemental Figure 12).

Unlike *Arabidopsis*, and due to challenges such as genetic redundancy, soybean has limited resources of genetic mutants that would facilitate the study of miRNAs and phasiRNAs. However, approaches for targeted genome editing using methods such as TALENs (transcription-activator like effector nucleases) (Christian et al., 2010) or CRISPRs (clustered, regularly interspaced, short palindromic repeats) (Cong et al., 2013) are a promising option for the analysis of small RNAs in soybean. In addition, the reduction of specific miRNAs by short tandem target mimic (Yan et al., 2012) or other target-mimic approaches would be useful as a tool to study the role of miRNA triggers.

## Conclusions

We present an analysis of a large small RNA data set for soybean, as well as PARE data, to identify *PHAS* loci, to evaluate miRBase-annotated miRNAs, and to discover novel miRNAs. Hundreds of *PHAS* loci were identified, many of which overlapped with protein-encoding genes. The largest class of the protein-coding *PHAS* loci was *NB-LRRs*, some of which were abundant specifically in nodules. Two additional *TAS3* loci and atypical phasing patterns were also revealed. We demonstrated that phasiRNAs and both known and novel miRNAs were expressed preferentially in particular tissues and treatments. Among these, we identified a pair of novel noncoding *PHAS* loci and their trigger, both specific to anthers. A specialized function of the phasiRNAs generated from this locus may be to regulate TE activity during plant reproduction.

## METHODS

### Plant Materials

For reproductive tissues, soybean (*Glycine max*) plants from the cultivar Williams 82 were grown in the greenhouse under 16 h light/8 h dark at 25°C. Floral tissues were collected from unopened flowers and flowers open for 1 d. Anther and ovary tissues were dissected from unopened flowers. For the nodule tissues, developing nodules were collected from soybean 10, 15, 20, 25, and 30 d after inoculation with *Bradyrhizobium japonicum* strain USDA110. For water-stressed samples, the inbred lines IA3023 and LD00-3309 were sown in two pots, one as a control and another for the stress treatment. The plants were grown up to V1 stage, and all pots were irrigated once in 2 d to the field capacity (1600 mL water). At V1 stage, the irrigation was withheld from stress pots alone, and the

control pots were irrigated until the end of the experiment. Once the 50% of the plants under stress reached a permanent wilting point (leaf water potential ranging from -8 to -10 bars), the leaf samples were collected from both the control and stress pots. For the pathogen-mimic treatments, the leaf samples from three genotypes of soybean, Williams 82, Dassel, and Vinton 81, were treated with chitin octamer and water control for 30 min. The leaf samples from the same genotypes were also treated with conserved 22-amino acid peptide from bacterial flagellin 22 and water control for 30 min. Samples collected from all tissues were immediately frozen in liquid nitrogen before RNA extraction.

### RNA Extraction and Sequencing of sRNAs and PARE

Total RNA was isolated from the plant materials using Concert Plant RNA Reagent (Invitrogen/Life Technologies). Small RNA libraries were constructed using the TruSeq Small RNA Sample Preparation Kits (Illumina). PARE libraries were constructed as previously described (Zhai et al., 2014). The libraries were sequenced on an Illumina HiSeq 2000 at the Delaware Biotechnology Institute (Newark, DE).

### Computational Analysis of Sequencing Data

The raw sequencing data were trimmed to remove adaptor sequences and then mapped to the soybean genome (DOE-JGI Community Sequencing Program v1.1) using Bowtie (Langmead et al., 2009). Reads that perfectly matched the soybean genome, excluding those matching tRNAs, rRNAs, snRNA, and snoRNAs, were used for further study. Soybean mature miRNAs and their precursors were retrieved from miRBase (version 20; <http://www.mirbase.org/>).

### miRNA Prediction Pipeline

The miRNA prediction pipeline is outlined in Supplemental Figure 4. Individual steps in the process were performed with Perl scripts as described (Jeong et al., 2011) combined with miREAP (<https://sourceforge.net/projects/mireap/>) and CentroidFold (Sato et al., 2009). miREAP was used to evaluate the pairing of the miRNA and miRNA\* with the parameters set to allow a maximal distance of 400 nucleotides between miRNA and miRNA\* (-d 400), extending 25 nucleotides at the end of the precursor (-f 25), with filters optimized for animal miRNAs turned off and including minor tuning for plant miRNA characteristics (our modified version of miREAP is available upon request). In addition, two miRNA features were requested: single-strand bias  $\geq 0.9$  and an abundance bias  $\geq 0.7$  based on the features of conserved miRNAs. CentroidFold was used with default settings to visualize the overall miRNA precursor structure for manual evaluation.

### miRNA Target Prediction and PARE Validation

Genome-wide targets of 394 microRNAs were identified and validated; this represents 312 typical miRNAs, 15 marginal miRNAs, 44 new miRNA variants, and 23 novel miRNAs. Validation was performed using the *sPARTA* package (Kakrana et al., 2015). Target prediction was performed using *sPARTA*'s built-in target prediction module *miRfermo* with standard scoring schema and score cutoff  $\leq 7$ , followed by PARE-based validation of predicted targets. The validated miRNA-target interactions that passed a threshold of a corrected P value cutoff of 0.05 and with PARE read abundance  $\geq 5$  at the cleavage site were considered for further interpretation.

### Phasing Analysis

After mapping sRNA reads to soybean genome, individual sRNAs were denoted with their matching coordinates. A two-nucleotide positive offset was added for sRNA matching to the antisense strand because of the

existence of two-nucleotide overhang at the 3' end of sRNA duplex. A genome-wide search was performed using a nine-cycle sliding window (189 bp) with each shift of three cycles (63 bp), and windows were reported when  $\geq 10$  unique reads fell into a nine-cycle window,  $\geq 50\%$  of matched unique reads were 21 nucleotides in length, and with  $\geq 3$  unique reads fell into a certain register. Next reported windows with overlapping region were combined into a single longer window. Then, a P value was calculated for each window based on the mapping results using an algorithm of Xia et al. (2013). As a final check of loci with phasing P value  $\leq 0.001$ , P value and abundances of small RNAs from each locus were graphed and checked visually to remove false positives such as miRNA loci with numerous low abundance peaks could incorrectly pass our filters. Unannotated tRNA and rRNA-like loci were also manually removed.

### Analysis of Differential Abundance of miRNAs

Differential expression for all miRNAs was analyzed in pairwise (i.e., control versus stress treatment) for water-stressed and pathogen-mimic-treated samples based on the read abundance data and using Bioconductor's R package "baySeq" (Hardcastle and Kelly, 2010). miRNAs accumulating to significantly different levels were identified based on the estimated posterior likelihoods of  $\geq 0.95$ .

### Accession Numbers

The soybean small RNA and PARE sequencing data were submitted to the NCBI Gene Expression Omnibus under accession number GSE58779.

### Supplemental Data

The following materials are available in the online version of this article.

**Supplemental Figure 1.** Small RNA Size Distribution from Different Soybean Tissues.

**Supplemental Figure 2.** Leaf Small RNA Size Distributions in *Arabidopsis* and Soybean.

**Supplemental Figure 3.** Examples of miRBase-Annotated miRNAs in Our Four Categories of Assessment.

**Supplemental Figure 4.** The Pipeline for the Identification of Novel miRNA and miRNA Variants.

**Supplemental Figure 5.** Abundance Profiles of the miR171 Family.

**Supplemental Figure 6.** Secondary Structures for the Stem-Loop Region of Precursors of the Soybean miRNAs That are Triggers of PHAS Loci.

**Supplemental Figure 7.** PhasiRNAs from the *ARF4* Locus Are Triggered by TasiARFs.

**Supplemental Figure 8.** Several Soybean Loci Related to Arogenate Dehydrogenase-Encoding Transcripts Are Abundant Sources of 21-Nucleotide PhasiRNAs.

**Supplemental Figure 9.** Seed-Specific PHAS Loci from *MYB5* Genes.

**Supplemental Figure 10.** Decrease of miR390 and *TAS3a* and *TAS3b* Read Abundances during Nodule Development.

**Supplemental Figure 11.** Colocalization of Legume Anther- or Flower-Specific PHAS Loci and Their miRNA Triggers.

**Supplemental Figure 12.** A Model of Transposable Element Regulation in Legume Pollen by Pollen-Specific PhasiRNAs.

**Supplemental Data Set 1A.** Number of Small RNAs from Soybean Libraries, from SBS Sequencing.

**Supplemental Data Set 1B.** Evaluation of Annotated Soybean miRNAs from miRBase (Version 20).

**Supplemental Data Set 1C.** Novel Soybean miRNAs.

**Supplemental Data Set 1D.** Soybean miRNA Variants.

**Supplemental Data Set 1E.** Bayseq Results for Biotic and Abiotic Stressed Soybean.

**Supplemental Data Set 1F.** Number of PARE Reads from Soybean Libraries, by SBS Sequencing.

**Supplemental Data Set 1G.** PARE Validation of miRNA Targets from miRBase Version 20.

**Supplemental Data Set 1H.** PARE Validation of Targets of Novel miRNAs and Variants.

**Supplemental Data Set 1I.** PHAS Loci in Soybean.

**Supplemental Data Set 1J.** Repeat Targets of PhasiRNAs from Soybean Anthers.

**Supplemental Data Set 1K.** Species Specificity of Soybean Low Abundance miRNAs.

**Supplemental Data Set 1L.** Repeat Targets of PhasiRNAs from Medicago Flower.

### ACKNOWLEDGMENTS

We thank Moaine Elbaidouri and Scott A. Jackson (University of Georgia) for helpful discussions about the synteny analysis. We also thank George Graef (University of Nebraska) for providing Vinton81 and Dassel seeds. This work was supported by funding from the United Soybean Board and the North Central Soybean Research Program. Research in the G.S. laboratory was funded by a grant from the U.S. National Science Foundation Plant Genome Program (Grant DBI-0421620).

### AUTHOR CONTRIBUTIONS

S.A. generated the sequencing data. S.A., R.X., A.K., and J.X. carried out bioinformatic analyses. S.A., K.H., Z.Y., O.V.-L., T.A.M., S.P., H.T.N., and G.S. generated materials and data. S.A., R.X., J.Z., and B.C.M. conceived of the study, participated in its design and coordination, and wrote the article. All authors read and approved the final article.

Received September 8, 2014; revised November 1, 2014; accepted November 13, 2014; published December 2, 2014.

### REFERENCES

- Abeynayake, S.W., Panter, S., Chapman, R., Webster, T., Rochfort, S., Mouradov, A., and Spangenberg, G. (2012). Biosynthesis of proanthocyanidins in white clover flowers: cross talk within the flavonoid pathway. *Plant Physiol.* **158**: 666–678.
- Addo-Quaye, C., Eshoo, T.W., Bartel, D.P., and Axtell, M.J. (2008). Endogenous siRNA and miRNA targets identified by sequencing of the *Arabidopsis* degradome. *Curr. Biol.* **18**: 758–762.
- Adenot, X., Elmayan, T., Laressergues, D., Boutet, S., Bouché, N., Gascioli, V., and Vaucheret, H. (2006). DRB4-dependent TAS3 trans-acting siRNAs control leaf morphology through AGO7. *Curr. Biol.* **16**: 927–932.
- Allen, E., Xie, Z., Gustafson, A.M., and Carrington, J.C. (2005). microRNA-directed phasing during trans-acting siRNA biogenesis in plants. *Cell* **121**: 207–221.

- Axtell, M.J.** (2013). Classification and comparison of small RNAs from plants. *Annu. Rev. Plant Biol.* **64**: 137–159.
- Axtell, M.J., Jan, C., Rajagopalan, R., and Bartel, D.P.** (2006). A two-hit trigger for siRNA biogenesis in plants. *Cell* **127**: 565–577.
- Bazin, J., Khan, G.A., Combiér, J.P., Bustos-Sanmamed, P., Debernardi, J.M., Rodríguez, R., Sorin, C., Palatnik, J., Hartmann, C., Crespi, M., and Lelandais-Brière, C.** (2013). miR396 affects mycorrhization and root meristem activity in the legume *Medicago truncatula*. *Plant J.* **74**: 920–934.
- Carthew, R.W., and Sontheimer, E.J.** (2009). Origins and mechanisms of miRNAs and siRNAs. *Cell* **136**: 642–655.
- Chen, H.M., Li, Y.H., and Wu, S.H.** (2007). Bioinformatic prediction and experimental validation of a microRNA-directed tandem trans-acting siRNA cascade in Arabidopsis. *Proc. Natl. Acad. Sci. USA* **104**: 3318–3323.
- Chen, H.M., Chen, L.T., Patel, K., Li, Y.H., Baulcombe, D.C., and Wu, S.H.** (2010). 22-Nucleotide RNAs trigger secondary siRNA biogenesis in plants. *Proc. Natl. Acad. Sci. USA* **107**: 15269–15274.
- Chen, X.** (2009). Small RNAs and their roles in plant development. *Annu. Rev. Cell Dev. Biol.* **25**: 21–44.
- Christian, M., Cermak, T., Doyle, E.L., Schmidt, C., Zhang, F., Hummel, A., Bogdanove, A.J., and Voytas, D.F.** (2010). Targeting DNA double-strand breaks with TAL effector nucleases. *Genetics* **186**: 757–761.
- Cong, L., Ran, F.A., Cox, D., Lin, S., Barretto, R., Habib, N., Hsu, P.D., Wu, X., Jiang, W., Marraffini, L.A., and Zhang, F.** (2013). Multiplex genome engineering using CRISPR/Cas systems. *Science* **339**: 819–823.
- Creasey, K.M., Zhai, J., Borges, F., Van Ex, F., Regulski, M., Meyers, B.C., and Martienssen, R.A.** (2014). miRNAs trigger widespread epigenetically activated siRNAs from transposons in Arabidopsis. *Nature* **508**: 411–415.
- Cuperus, J.T., Carbonell, A., Fahlgren, N., Garcia-Ruiz, H., Burke, R.T., Takeda, A., Sullivan, C.M., Gilbert, S.D., Montgomery, T.A., and Carrington, J.C.** (2010). Unique functionality of 22-nt miRNAs in triggering RDR6-dependent siRNA biogenesis from target transcripts in Arabidopsis. *Nat. Struct. Mol. Biol.* **17**: 997–1003.
- Dangl, J.L., and Jones, J.D.** (2001). Plant pathogens and integrated defence responses to infection. *Nature* **411**: 826–833.
- Dubos, C., Stracke, R., Grotewold, E., Weisshaar, B., Martin, C., and Lepiniec, L.** (2010). MYB transcription factors in Arabidopsis. *Trends Plant Sci.* **15**: 573–581.
- Dunoyer, P., Schott, G., Humber, C., Meyer, D., Takeda, A., Carrington, J.C., and Voinnet, O.** (2010). Small RNA duplexes function as mobile silencing signals between plant cells. *Science* **328**: 912–916.
- Eisen, M.B., Spellman, P.T., Brown, P.O., and Botstein, D.** (1998). Cluster analysis and display of genome-wide expression patterns. *Proc. Natl. Acad. Sci. USA* **95**: 14863–14868.
- Fahlgren, N., Montgomery, T.A., Howell, M.D., Allen, E., Dvorak, S.K., Alexander, A.L., and Carrington, J.C.** (2006). Regulation of AUXIN RESPONSE FACTOR3 by TAS3 ta-siRNA affects developmental timing and patterning in Arabidopsis. *Curr. Biol.* **16**: 939–944.
- Fei, Q., Xia, R., and Meyers, B.C.** (2013). Phased, secondary, small interfering RNAs in posttranscriptional regulatory networks. *Plant Cell* **25**: 2400–2415.
- García, M.A., Collado, M., Muñoz-Fontela, C., Matheu, A., Marcos-Villar, L., Arroyo, J., Esteban, M., Serrano, M., and Rivas, C.** (2006). Antiviral action of the tumor suppressor ARF. *EMBO J.* **25**: 4284–4292.
- German, M.A., Luo, S., Schroth, G., Meyers, B.C., and Green, P.J.** (2009). Construction of Parallel Analysis of RNA Ends (PARE) libraries for the study of cleaved miRNA targets and the RNA degradome. *Nat. Protoc.* **4**: 356–362.
- Gonzalez, A., Mendenhall, J., Huo, Y., and Lloyd, A.** (2009). TTG1 complex MYBs, MYB5 and TT2, control outer seed coat differentiation. *Dev. Biol.* **325**: 412–421.
- Gregory, B.D., O'Malley, R.C., Lister, R., Urich, M.A., Tonti-Filippini, J., Chen, H., Millar, A.H., and Ecker, J.R.** (2008). A link between RNA metabolism and silencing affecting Arabidopsis development. *Dev. Cell* **14**: 854–866.
- Hardcastle, T.J., and Kelly, K.A.** (2010). baySeq: empirical Bayesian methods for identifying differential expression in sequence count data. *BMC Bioinformatics* **11**: 422.
- Howell, M.D., Fahlgren, N., Chapman, E.J., Cumbie, J.S., Sullivan, C.M., Givan, S.A., Kasschau, K.D., and Carrington, J.C.** (2007). Genome-wide analysis of the RNA-DEPENDENT RNA POLYMERASE6/DICER-LIKE4 pathway in Arabidopsis reveals dependency on miRNA- and tasiRNA-directed targeting. *Plant Cell* **19**: 926–942.
- Hunter, C., Willmann, M.R., Wu, G., Yoshikawa, M., de la Luz Gutiérrez-Nava, M., and Poethig, S.R.** (2006). Trans-acting siRNA-mediated repression of ETTIN and ARF4 regulates heteroblasty in Arabidopsis. *Development* **133**: 2973–2981.
- Jeong, D.H., Park, S., Zhai, J., Gurazada, S.G., De Paoli, E., tMeyers, B.C., and Green, P.J.** (2011). Massive analysis of rice small RNAs: mechanistic implications of regulated microRNAs and variants for differential target RNA cleavage. *Plant Cell* **23**: 4185–4207.
- Jeong, D.H., et al.** (2013). Parallel analysis of RNA ends enhances global investigation of microRNAs and target RNAs of *Brachypodium distachyon*. *Genome Biol.* **14**: R145.
- Johnson, C., Kasprzewska, A., Tennessen, K., Fernandes, J., Nan, G.L., Walbot, V., Sundaresan, V., Vance, V., and Bowman, L.H.** (2009). Clusters and superclusters of phased small RNAs in the developing inflorescence of rice. *Genome Res.* **19**: 1429–1440.
- Kakrana, A., Hammond, R., Patel, P., Nakano, M., and Meyers, B.C.** (2015). sPARTA: a parallelized pipeline for integrated analysis of plant miRNA and cleaved mRNA data sets, including new miRNA target-identification software. *Nucleic Acids Res.* **42**: e139.
- Källman, T., Chen, J., Gyllenstrand, N., and Lagercrantz, U.** (2013). A significant fraction of 21-nucleotide small RNA originates from phased degradation of resistance genes in several perennial species. *Plant Physiol.* **162**: 741–754.
- Kang, Y.J., Kim, K.H., Shim, S., Yoon, M.Y., Sun, S., Kim, M.Y., Van, K., and Lee, S.H.** (2012). Genome-wide mapping of NBS-LRR genes and their association with disease resistance in soybean. *BMC Plant Biol.* **12**: 139.
- Kanno, T., and Habu, Y.** (2011). siRNA-mediated chromatin maintenance and its function in *Arabidopsis thaliana*. *Biochim. Biophys. Acta* **1809**: 444–451.
- Kim, V.N.** (2005). MicroRNA biogenesis: coordinated cropping and dicing. *Nat. Rev. Mol. Cell Biol.* **6**: 376–385.
- Langmead, B., Trapnell, C., Pop, M., and Salzberg, S.L.** (2009). Ultrafast and memory-efficient alignment of short DNA sequences to the human genome. *Genome Biol.* **10**: R25.
- Li, X., Wang, X., Zhang, S., Liu, D., Duan, Y., and Dong, W.** (2012). Identification of soybean microRNAs involved in soybean cyst nematode infection by deep sequencing. *PLoS ONE* **7**: e39650.
- Liu, P., Wei, W., Ouyang, S., Zhang, J.S., Chen, S.Y., and Zhang, W.K.** (2009). Analysis of expressed receptor-like kinases (RLKs) in soybean. *J. Genet. Genomics* **36**: 611–619.
- Liu, Y., Wang, Y., Zhu, Q.H., and Fan, L.** (2013). Identification of phasiRNAs in wild rice (*Oryza rufipogon*). *Plant Signal. Behav.* **8**: 8.
- Mallory, A.C., and Bouché, N.** (2008). MicroRNA-directed regulation: to cleave or not to cleave. *Trends Plant Sci.* **13**: 359–367.

- Manavella, P.A., Koenig, D., and Weigel, D.** (2012). Plant secondary siRNA production determined by microRNA-duplex structure. *Proc. Natl. Acad. Sci. USA* **109**: 2461–2466.
- Marin, E., Jouannet, V., Herz, A., Lokerse, A.S., Weijers, D., Vaucheret, H., Nussaume, L., Crespi, M.D., and Maizel, A.** (2010). miR390, Arabidopsis TAS3 tasiRNAs, and their AUXIN RESPONSE FACTOR targets define an autoregulatory network quantitatively regulating lateral root growth. *Plant Cell* **22**: 1104–1117.
- Meyers, B.C., et al.** (2008). Criteria for annotation of plant microRNAs. *Plant Cell* **20**: 3186–3190.
- Mi, S., et al.** (2008). Sorting of small RNAs into Arabidopsis argonaute complexes is directed by the 5' terminal nucleotide. *Cell* **133**: 116–127.
- Mlotshwa, S., Voinnet, O., Mette, M.F., Matzke, M., Vaucheret, H., Ding, S.W., Pruss, G., and Vance, V.B.** (2002). RNA silencing and the mobile silencing signal. *Plant Cell* **14** (suppl.): S289–S301.
- Rajagopalan, R., Vaucheret, H., Trejo, J., and Bartel, D.P.** (2006). A diverse and evolutionarily fluid set of microRNAs in *Arabidopsis thaliana*. *Genes Dev.* **20**: 3407–3425.
- Sato, K., Hamada, M., Asai, K., and Mituyama, T.** (2009). GEN-TROIDFOLD: a web server for RNA secondary structure prediction. *Nucleic Acids Res.* **37**: W277–W280.
- Saze, H., Tsugane, K., Kanno, T., and Nishimura, T.** (2012). DNA methylation in plants: relationship to small RNAs and histone modifications, and functions in transposon inactivation. *Plant Cell Physiol.* **53**: 766–784.
- Schmutz, J., et al.** (2010). Genome sequence of the palaeopolyploid soybean. *Nature* **463**: 178–183.
- Shang, J., et al.** (2009). Identification of a new rice blast resistance gene, *Pid3*, by genomewide comparison of paired nucleotide-binding site–leucine-rich repeat genes and their pseudogene alleles between the two sequenced rice genomes. *Genetics* **182**: 1303–1311.
- Shivaprasad, P.V., Chen, H.M., Patel, K., Bond, D.M., Santos, B.A., and Baulcombe, D.C.** (2012). A microRNA superfamily regulates nucleotide binding site-leucine-rich repeats and other mRNAs. *Plant Cell* **24**: 859–874.
- Simon, S.A., Meyers, B.C., and Sherrier, D.J.** (2009). MicroRNAs in the rhizobia legume symbiosis. *Plant Physiol.* **151**: 1002–1008.
- Slotkin, R.K., Vaughn, M., Borges, F., Tanurdzić, M., Becker, J.D., Feijó, J.A., and Martienssen, R.A.** (2009). Epigenetic reprogramming and small RNA silencing of transposable elements in pollen. *Cell* **136**: 461–472.
- Song, Q.X., Liu, Y.F., Hu, X.Y., Zhang, W.K., Ma, B., Chen, S.Y., and Zhang, J.S.** (2011). Identification of miRNAs and their target genes in developing soybean seeds by deep sequencing. *BMC Plant Biol.* **11**: 5.
- Subramanian, S.** (2012). MicroRNA regulation of symbiotic nodule development in legumes. In *MicroRNAs in Plant Development and Stress Responses*, R. Sunkar, ed (Berlin, Heidelberg: Springer), pp. 177–195.
- Subramanian, S., Fu, Y., Sunkar, R., Barbazuk, W.B., Zhu, J.K., and Yu, O.** (2008). Novel and nodulation-regulated microRNAs in soybean roots. *BMC Genomics* **9**: 160.
- Takeda, A., Iwasaki, S., Watanabe, T., Utsumi, M., and Watanabe, Y.** (2008). The mechanism selecting the guide strand from small RNA duplexes is different among argonaute proteins. *Plant Cell Physiol.* **49**: 493–500.
- Talamè, V., Ozturk, N.Z., Bohnert, H.J., and Tuberosa, R.** (2007). Barley transcript profiles under dehydration shock and drought stress treatments: a comparative analysis. *J. Exp. Bot.* **58**: 229–240.
- Tuteja, J.H., Zabala, G., Varala, K., Hudson, M., and Vodkin, L.O.** (2009). Endogenous, tissue-specific short interfering RNAs silence the chalcone synthase gene family in *Glycine max* seed coats. *Plant Cell* **21**: 3063–3077.
- Williams, L., Carles, C.C., Osmont, K.S., and Fletcher, J.C.** (2005). A database analysis method identifies an endogenous trans-acting short-interfering RNA that targets the Arabidopsis *ARF2*, *ARF3*, and *ARF4* genes. *Proc. Natl. Acad. Sci. USA* **102**: 9703–9708.
- Xia, R., Meyers, B.C., Liu, Z., Beers, E.P., Ye, S., and Liu, Z.** (2013). MicroRNA superfamilies descended from miR390 and their roles in secondary small interfering RNA biogenesis in Eudicots. *Plant Cell* **25**: 1555–1572.
- Yan, J., Gu, Y., Jia, X., Kang, W., Pan, S., Tang, X., Chen, X., and Tang, G.** (2012). Effective small RNA destruction by the expression of a short tandem target mimic in Arabidopsis. *Plant Cell* **24**: 415–427.
- Yan, Z., Hossain, M.S., Wang, J., Valdés-López, O., Liang, Y., Libault, M., Qiu, L., and Stacey, G.** (2013). miR172 regulates soybean nodulation. *Mol. Plant Microbe Interact.* **26**: 1371–1377.
- Yang, J.H., Han, S.J., Yoon, E.K., and Lee, W.S.** (2006). Evidence of an auxin signal pathway, microRNA167-ARF8-GH3, and its response to exogenous auxin in cultured rice cells. *Nucleic Acids Res.* **34**: 1892–1899.
- Yoshikawa, M., Peragine, A., Park, M.Y., and Poethig, R.S.** (2005). A pathway for the biogenesis of trans-acting siRNAs in Arabidopsis. *Genes Dev.* **19**: 2164–2175.
- Zabala, G., Campos, E., Varala, K.K., Bloomfield, S., Jones, S.I., Win, H., Tuteja, J.H., Calla, B., Clough, S.J., Hudson, M., and Vodkin, L.O.** (2012). Divergent patterns of endogenous small RNA populations from seed and vegetative tissues of *Glycine max*. *BMC Plant Biol.* **12**: 177.
- Zhai, J., Arikiti, S., Simon, S.A., Kingham, B.F., and Meyers, B.C.** (2014). Rapid construction of parallel analysis of RNA end (PARE) libraries for Illumina sequencing. *Methods* **67**: 84–90.
- Zhai, J., et al.** (2013). Plant microRNAs display differential 3' truncation and tailing modifications that are ARGONAUTE1 dependent and conserved across species. *Plant Cell* **25**: 2417–2428.
- Zhai, J., et al.** (2011). MicroRNAs as master regulators of the plant NB-LRR defense gene family via the production of phased, trans-acting siRNAs. *Genes Dev.* **25**: 2540–2553.
- Zhang, C., Li, G., Wang, J., and Fang, J.** (2012). Identification of trans-acting siRNAs and their regulatory cascades in grapevine. *Bioinformatics* **28**: 2561–2568.

**An Atlas of Soybean Small RNAs Identifies Phased siRNAs from Hundreds of Coding Genes**  
Siwaret Arikait, Rui Xia, Atul Kakrana, Kun Huang, Jixian Zhai, Zhe Yan, Oswaldo Valdés-López,  
Silvas Prince, Theresa A. Musket, Henry T. Nguyen, Gary Stacey and Blake C. Meyers  
*Plant Cell*; originally published online December 2, 2014;  
DOI 10.1105/tpc.114.131847

This information is current as of June 17, 2015

<b>Supplemental Data</b>	<a href="http://www.plantcell.org/content/suppl/2014/11/25/tpc.114.131847.DC1.html">http://www.plantcell.org/content/suppl/2014/11/25/tpc.114.131847.DC1.html</a> <a href="http://www.plantcell.org/content/suppl/2015/02/02/tpc.114.131847.DC2.html">http://www.plantcell.org/content/suppl/2015/02/02/tpc.114.131847.DC2.html</a>
<b>Permissions</b>	<a href="https://www.copyright.com/ccc/openurl.do?sid=pd_hw1532298X&amp;issn=1532298X&amp;WT.mc_id=pd_hw1532298X">https://www.copyright.com/ccc/openurl.do?sid=pd_hw1532298X&amp;issn=1532298X&amp;WT.mc_id=pd_hw1532298X</a>
<b>eTOCs</b>	Sign up for eTOCs at: <a href="http://www.plantcell.org/cgi/alerts/ctmain">http://www.plantcell.org/cgi/alerts/ctmain</a>
<b>CiteTrack Alerts</b>	Sign up for CiteTrack Alerts at: <a href="http://www.plantcell.org/cgi/alerts/ctmain">http://www.plantcell.org/cgi/alerts/ctmain</a>
<b>Subscription Information</b>	Subscription Information for <i>The Plant Cell</i> and <i>Plant Physiology</i> is available at: <a href="http://www.aspb.org/publications/subscriptions.cfm">http://www.aspb.org/publications/subscriptions.cfm</a>